

**Concrete garden//
Betoni-innovaatioita
Otaniemmeen**

P Paikotitusalue / Parking area
Kävelytie / Footpath
0 500m
suuntaa antava mittakaava / scale

Otaniemi Otnäs



Maarinranta
Marstranden

Kehä I

Arcada

Maarinniitty
Marängen

Teknikantie
Teknikvägen

Maari
Maren

Hagalundintie
Hagalundinpuisto

Hagalundinpuisto

Tullilab.

Ratsastus-
koulu

Vesitorni
Vattentorn

Tapiola
Hagalund

Otaniementie

Sähkötietie
Korkeakoulu-
aukio

Korkeakoulu-
aukio

Alvarin
aukio

Otakaari

Alvarin
aukio

Ostos-
keskus

Ostos-
keskus

Ostos-
keskus

Ostos-
keskus

Ostos-
keskus

Ostos-
keskus

Ostos-
keskus

Ostos-
keskus

Ostos-
keskus

Ostos-
keskus

Ostos-
keskus

Ostos-
keskus

Teekkarikylä
Teknologbyn

Jämeräntaival

Bistervägen

Bistervägen

Bistervägen

Bistervägen

Bistervägen

Bistervägen

Bistervägen

Bistervägen

Bistervägen

Bistervägen

Bistervägen

Bistervägen

Bistervägen

Bistervägen

Bistervägen

Bistervägen

Bistervägen

Bistervägen

Bistervägen

Bistervägen

Bistervägen

Bistervägen

Bistervägen

Bistervägen

Bistervägen

Bistervägen

Bistervägen

Bistervägen

Bistervägen

OTKK viestintä

Björnsömsvägen

Karhusaarentie

Otaranta

Otaranta

Otaranta

Otaranta

Otaranta

Otaranta

Otaranta

Otaranta

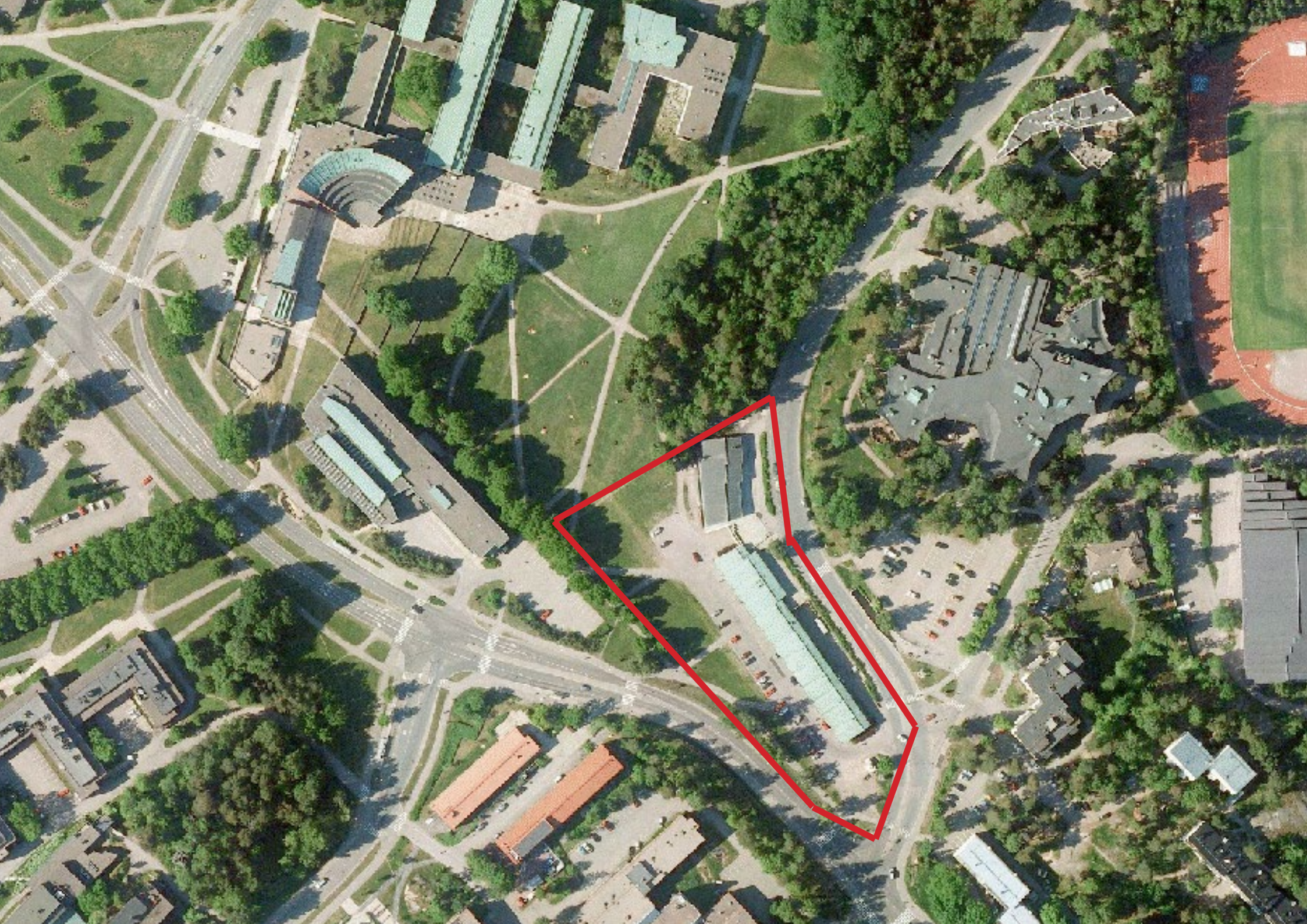
Otaranta

Otaranta

Otaranta

Otaranta

Otaranta











APTEEKKI APOTEKA

aito burana
b
burana
400 mg

Avène



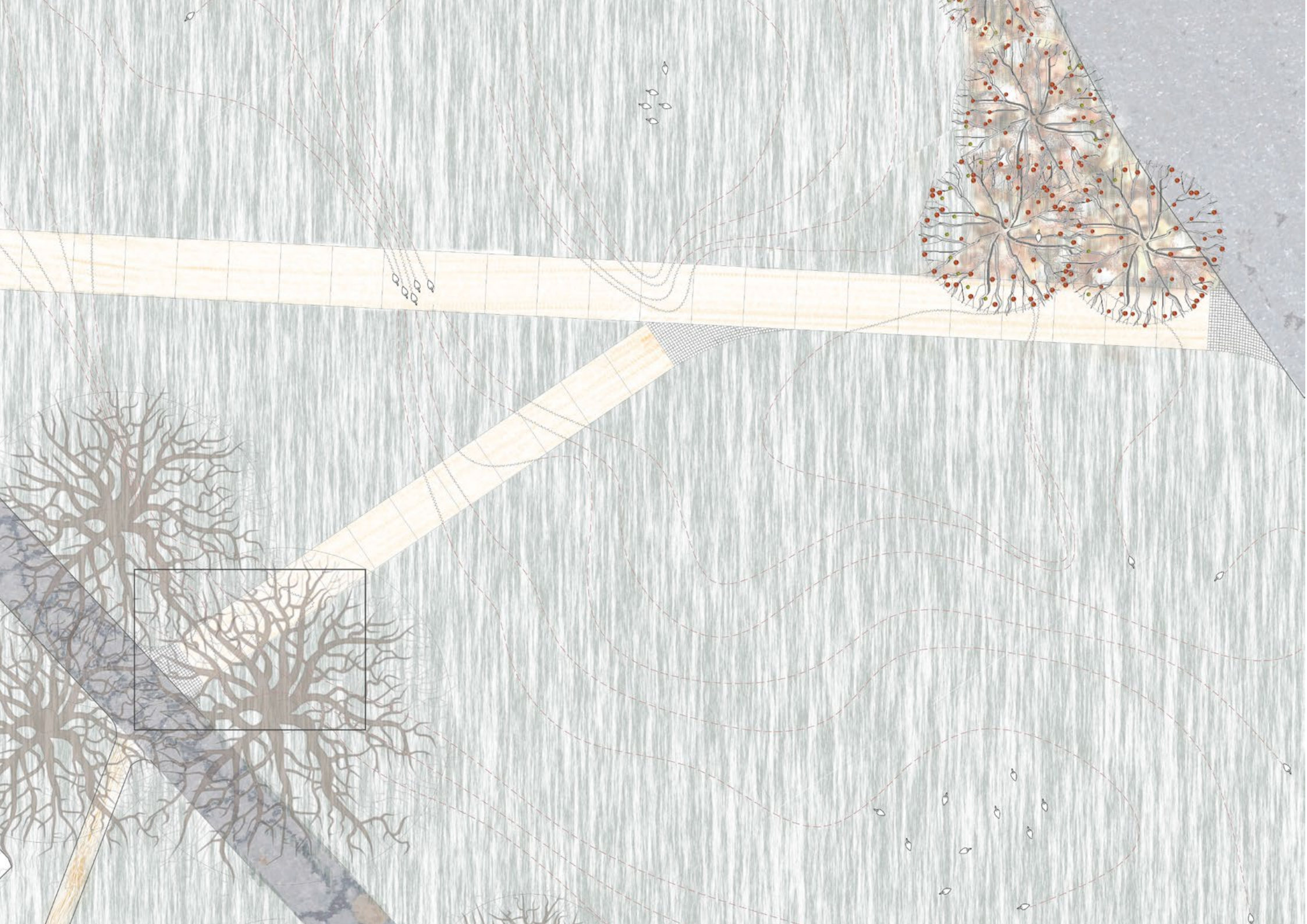
PARKURI

Oster



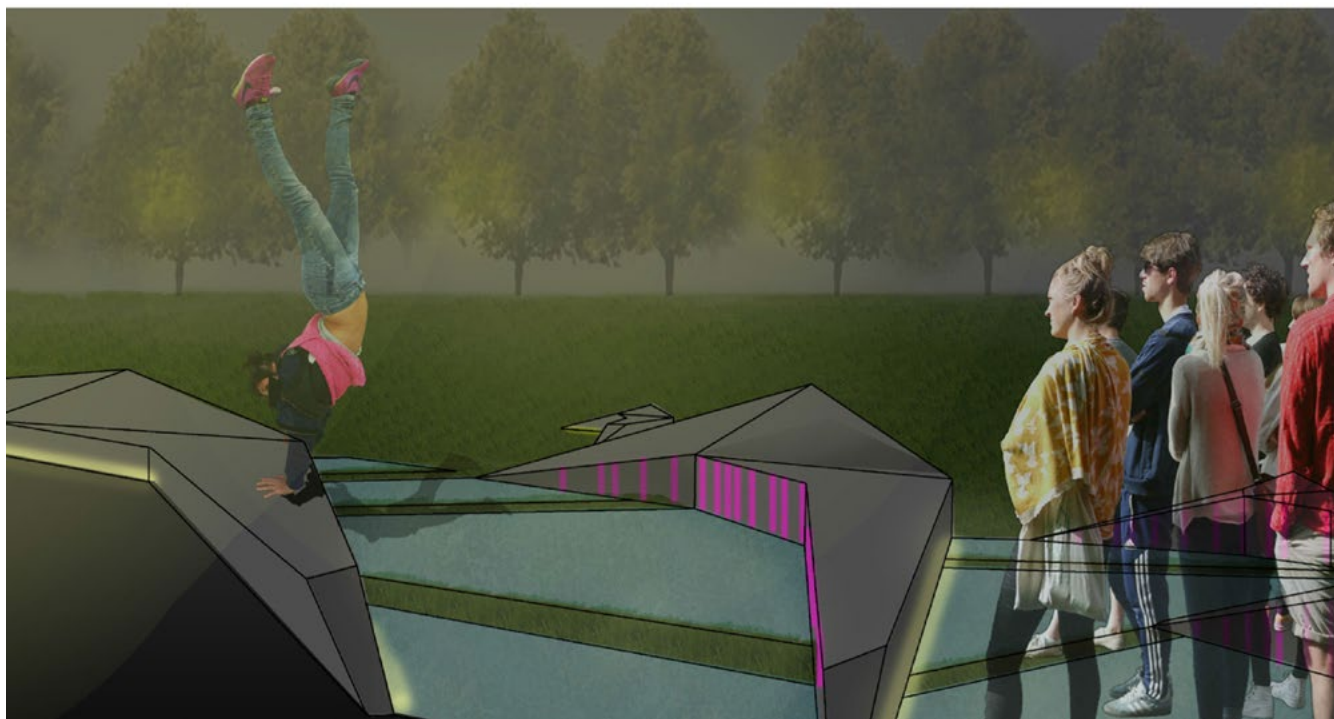
- umbrä- och varjare betoni
- nurmi
- purppurakäenkaali, maksaruoho, vuoripoimulehti
- istutettava puu, ruotsinpihlaja



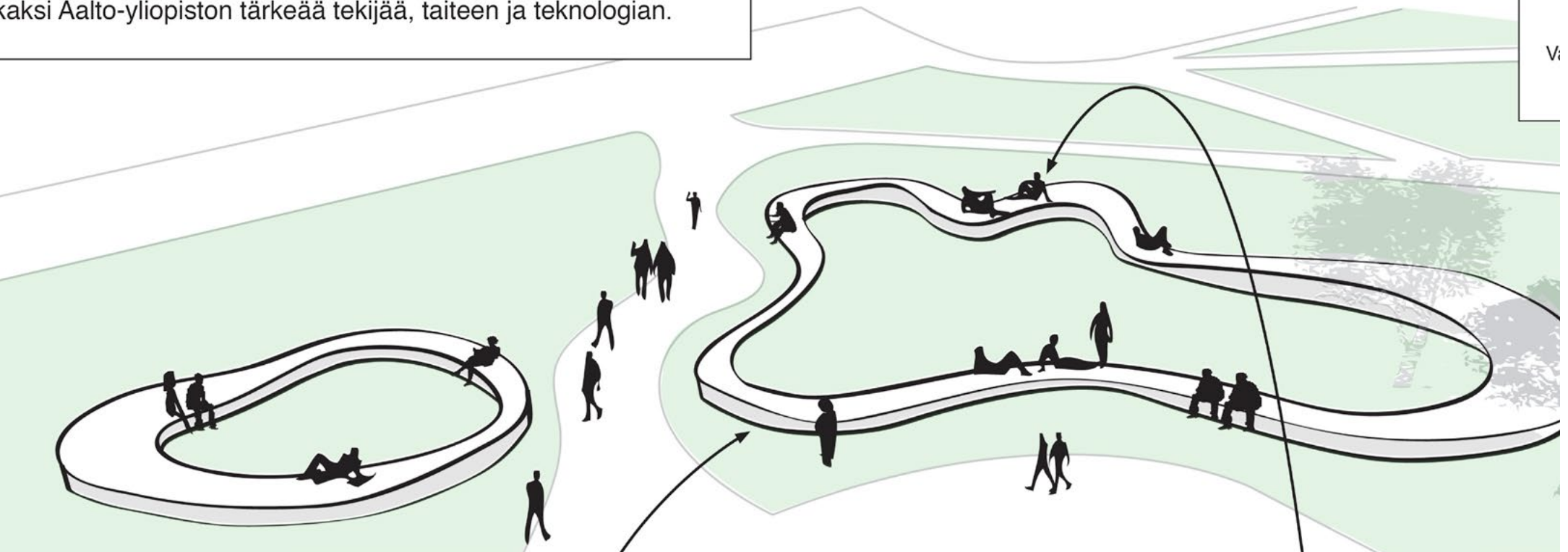


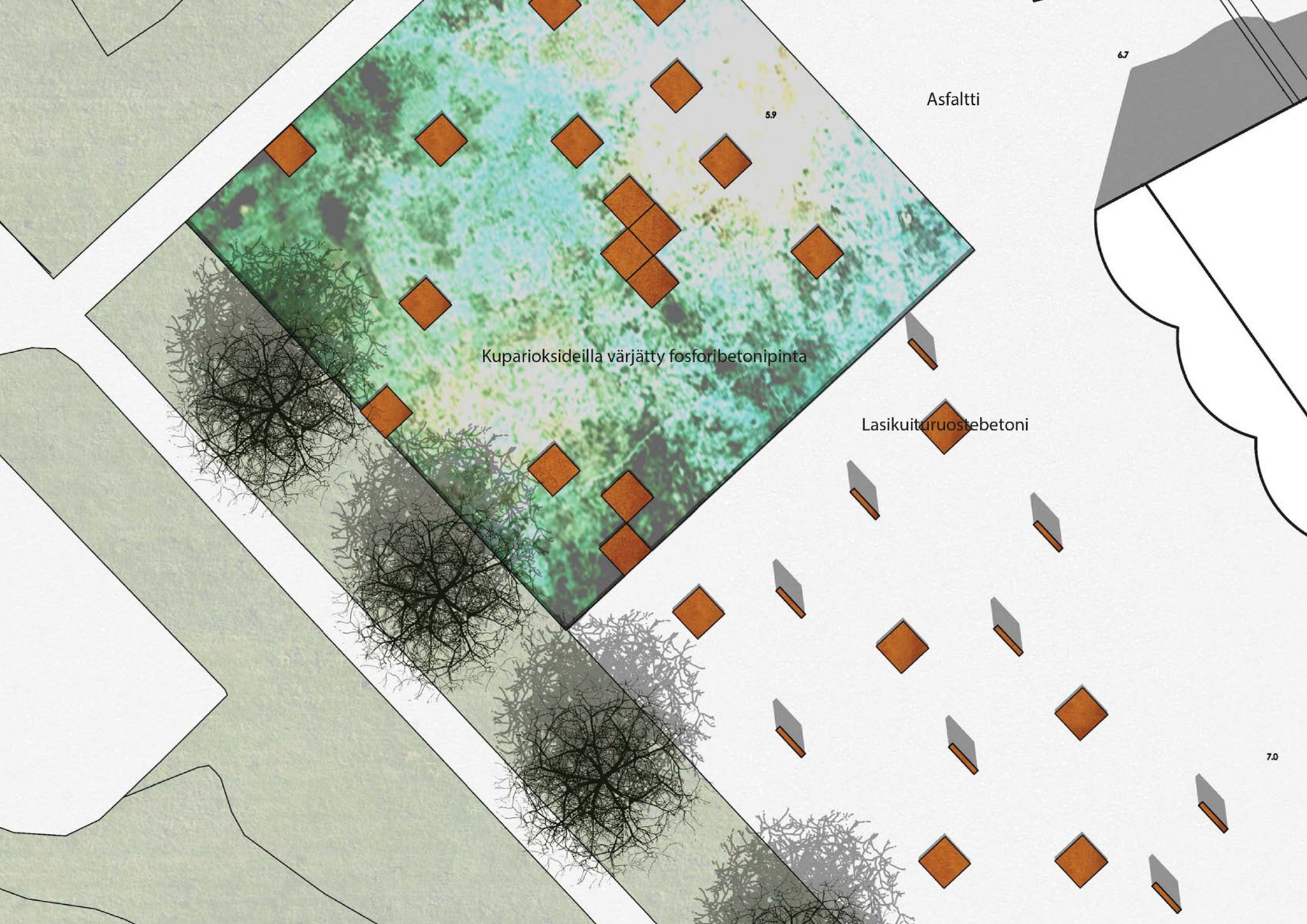


Äikymäkuva saapumisesta aukiolle (näkömä 3): avointa näkömäyhteyttä on vahvistettu jäsentämällä etualan tila nurmetuksella, betonielementeilla ja istutuksilla. Betonielementtiin upotetaan kuparinen "Otaniemen ostoskeskus"-teksti



teen opiskelijat ja Alvarinaukion ohikulkijat yhteen istumaan tois-
alokehä toimii istuimena mutta muuntuu myös esiintymislavasta
n valo ja lämpimät hotspotit houkuttelevat ihmisiä myös pimeäm-
kaksi Aalto-yliopiston tärkeää tekijää, taiteen ja teknologian.



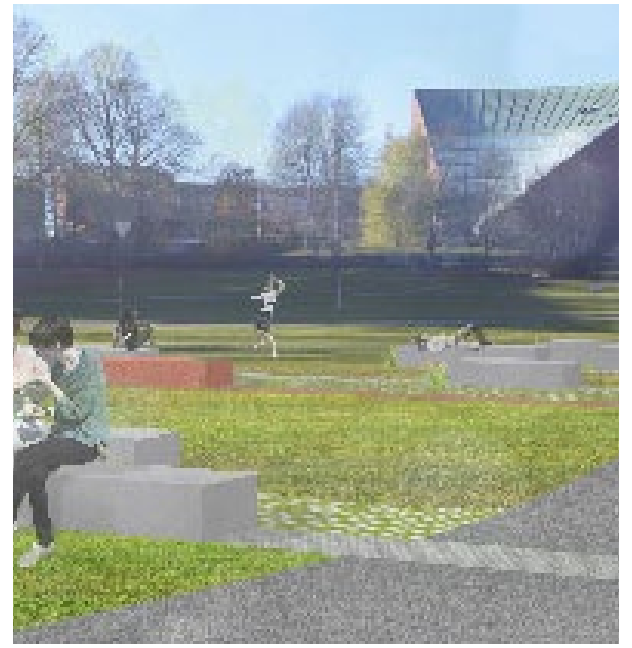
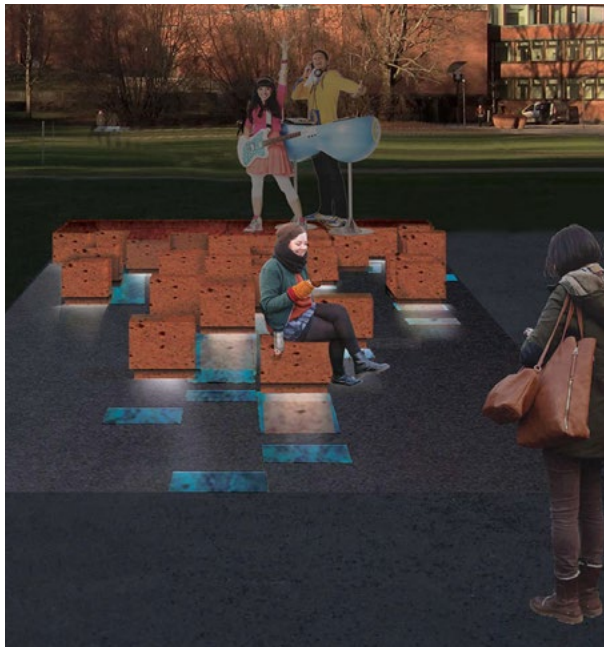
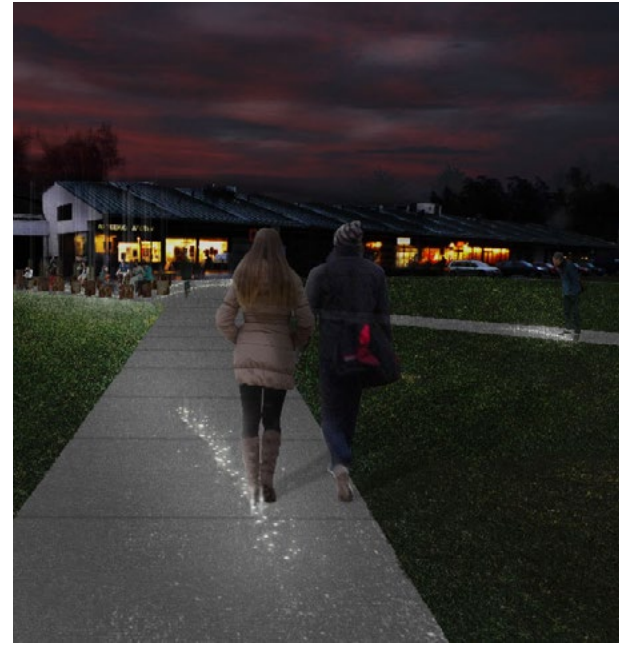


Asfaltti

Kuparioksideilla värjätty fosforibetonipinta

Lasikuituruosteabetoni

7.0









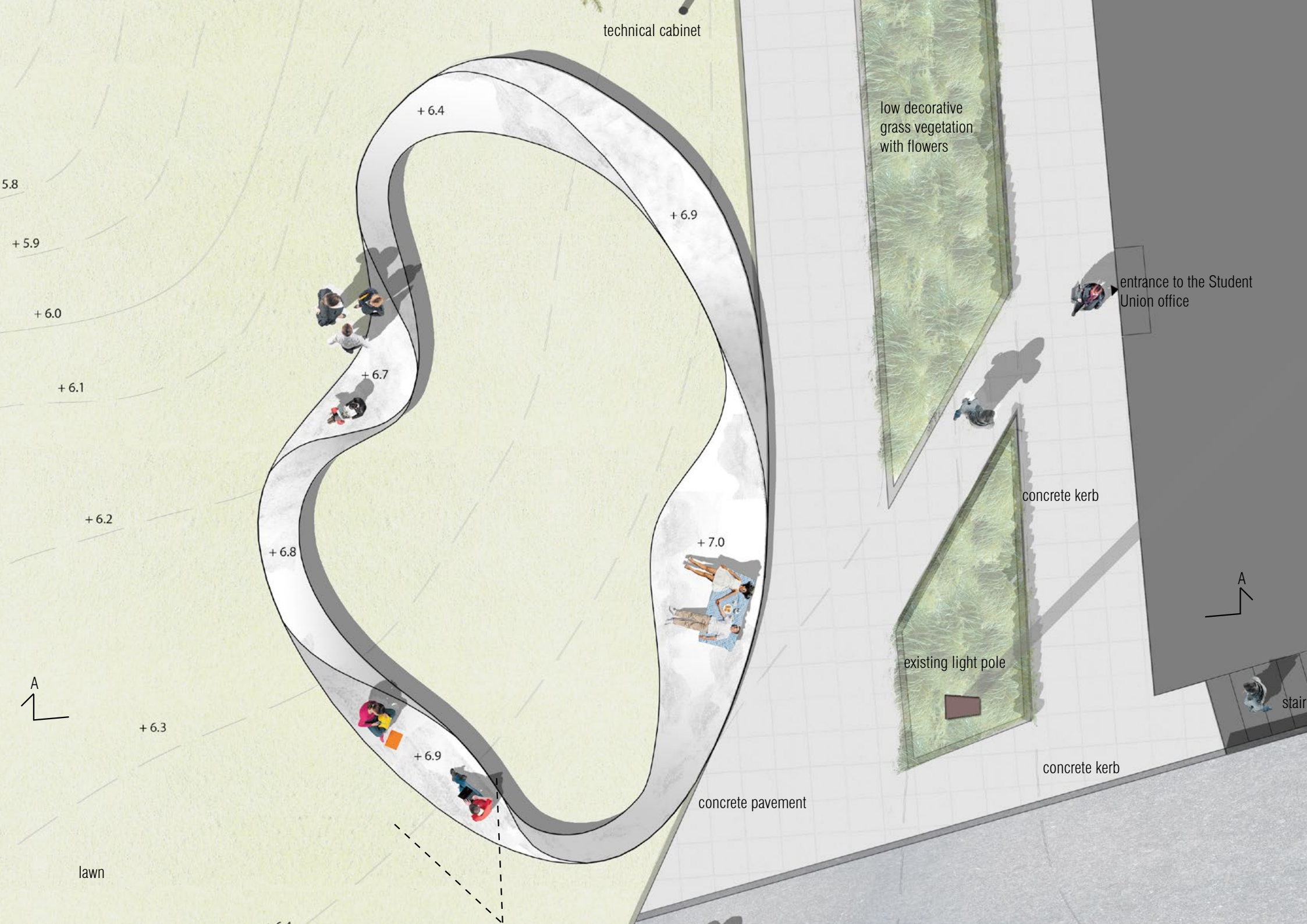




LOCATION

N





technical cabinet

+ 6.4

+ 6.9

low decorative
grass vegetation
with flowers

entrance to the Student
Union office

concrete kerb

existing light pole

concrete kerb

concrete pavement

stair

5.8

+ 5.9

+ 6.0

+ 6.1

+ 6.2

+ 6.8

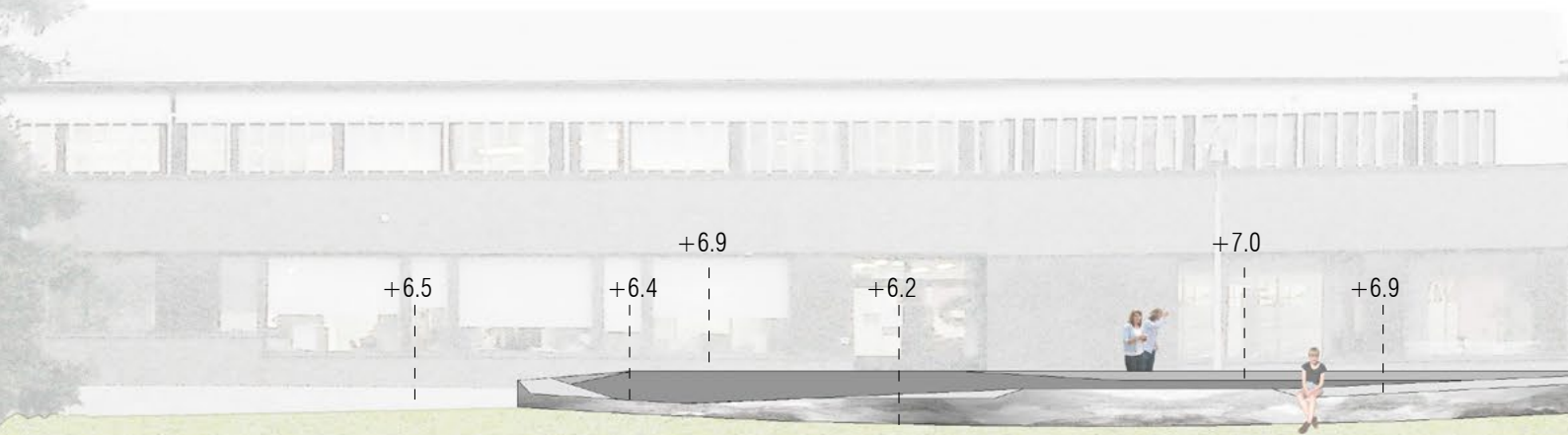
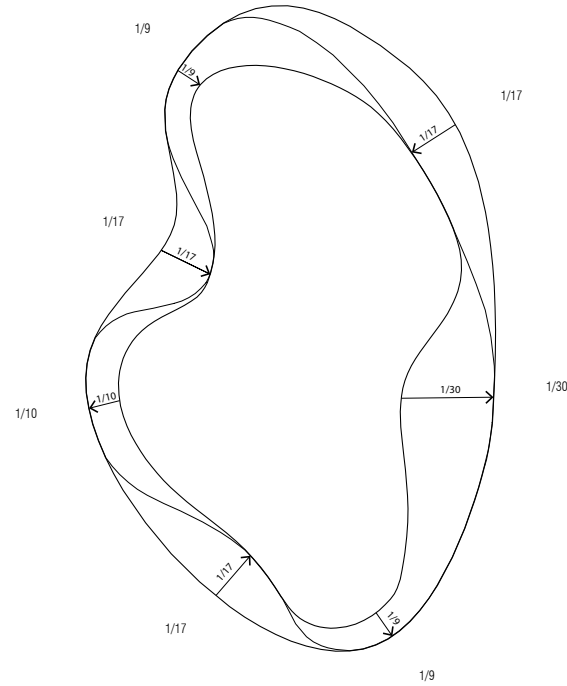
+ 6.7

+ 7.0

+ 6.9

+ 6.3

lawn



+6.5

+6.4

+6.9

+6.2

+7.0

+6.9





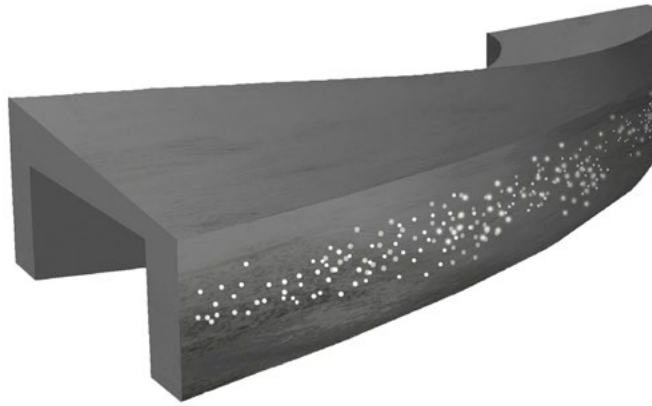
BRIGHT TIME OF THE DAY



Installation works as a sculpture and as a meeting point.



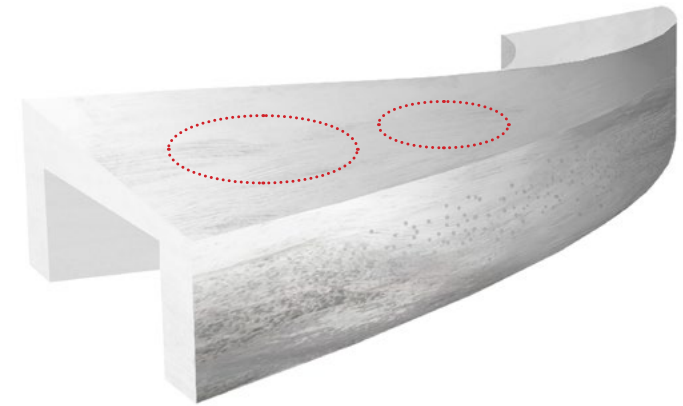
DARK TIME OF THE DAY



Sculpture turns into an interactive light installation:
Light follows the movement and illuminates



COOLER TIME OF THE DAY



There are few "hotspots" that are heated during the cooler evenings.

LIGHT FOR THE PEOPLE!

Light follows movement. The outer facade of Valoalto is lit with optical fibers that are brought to its surface. The lights are programmed to follow anyone who passes Valoalto. Movement information is detected by small infrared sensors that are placed on the facade near the ground. The information goes to a computer that programs the

lights. The computer and the light sources are located in a separate technical cabinet outside the concrete structure. Optical fibers are maintenance free. The lights will also be turned on if someone sits on the structure and moves their legs. If several people move around the structure, the light follows all of them.

SOME LIKE IT HOT!

There are heated hotspots on the concrete top. By warming up the concrete the active usage period of Valoalto will be extended. Hot spots are warmed by left-over energy from district heating. The idea has already been discussed with teachers in the department of Energy Technology as well as with Fortum, the district heating provider in the area. Fortum is interested in the project and would like to develop it further.

