

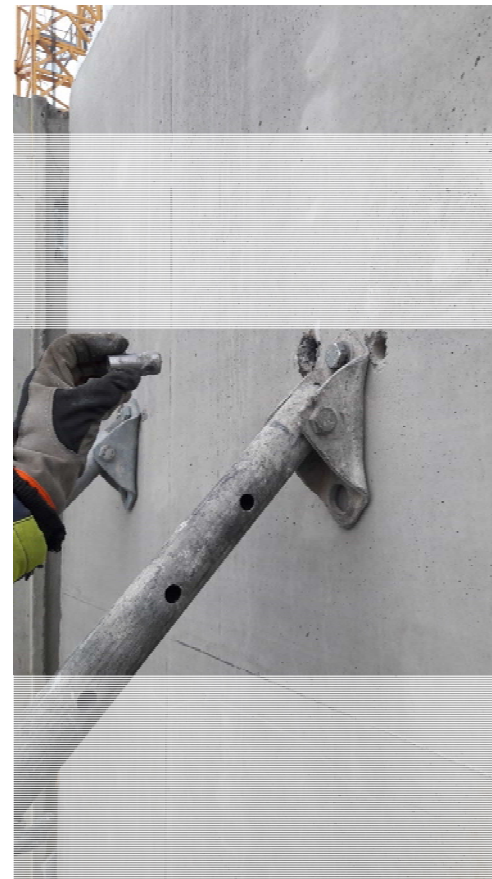
Safety Alert 9: Wall panel mounted without fixing anchor

Incident description

- The fixing anchor designed to be used to fix the diagonal brace had been forgotten from the wall panel.
- When the employee detected the error, he cut the fixing pins of the anchor and cast the anchor into the hole he drilled in the wall.
- In another similar case, the employee had mounted a push-in anchor into the hole he drilled, but had not driven the wedge to the bottom.
- In both cases the inadequate fastener was detected on the worksite before the lifting slings had been removed from the panel.

Corrective actions

- If a fixing anchor needed for the installation of a wall panel has not been installed in the panel, no action is taken at the plant to correct the mistake.
- The installation crew on the worksite has post-installation anchors that can be used to replace a missing fixing anchor.



A fixing anchor which has had anchor pins cut off and will not transmit fixing forces.